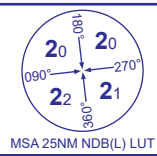


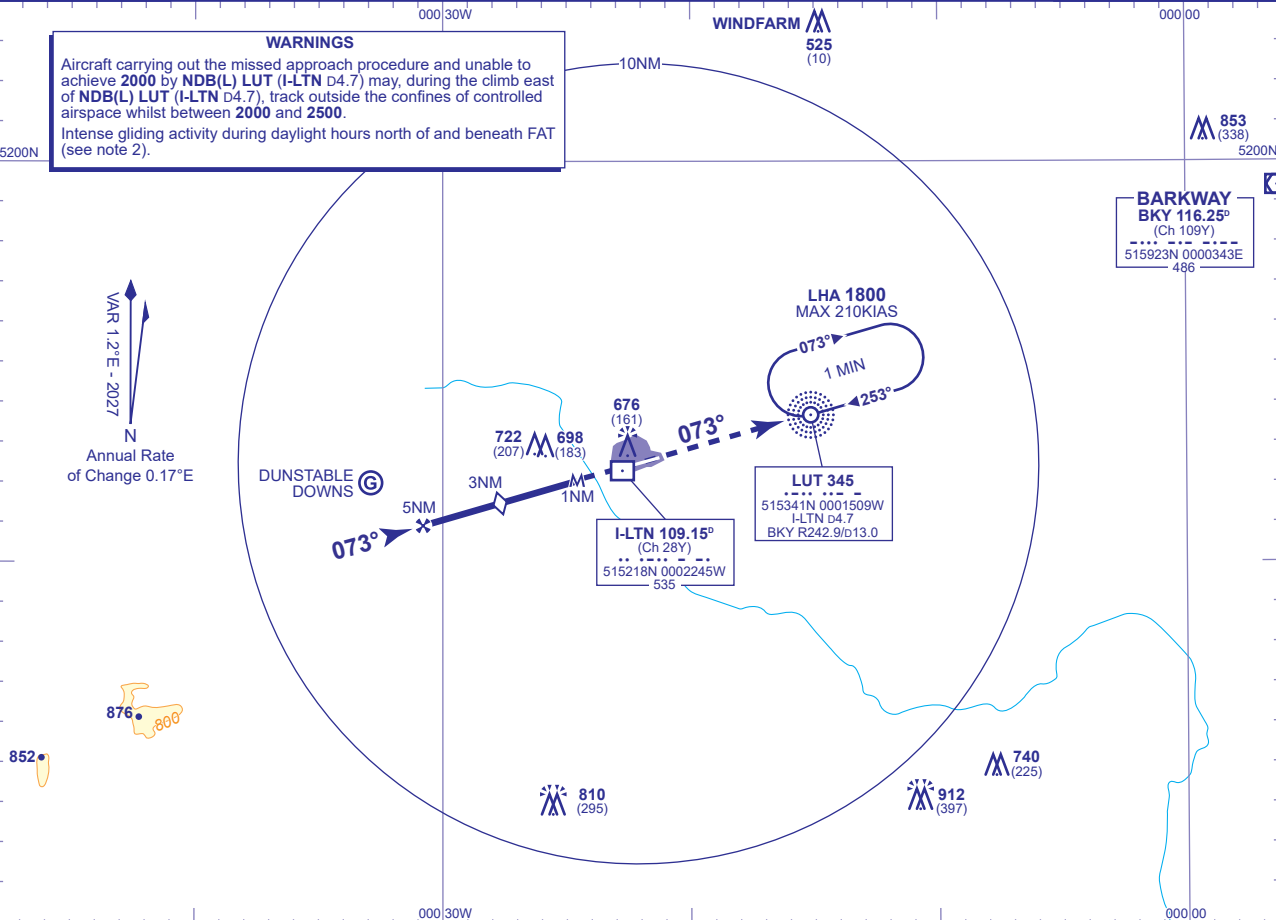
INSTANT APPROACH CHART - ICAO

LONDON LUTON
SRA RTR 2NM
RWY 07
(ACFT CAT A,B,C,D)



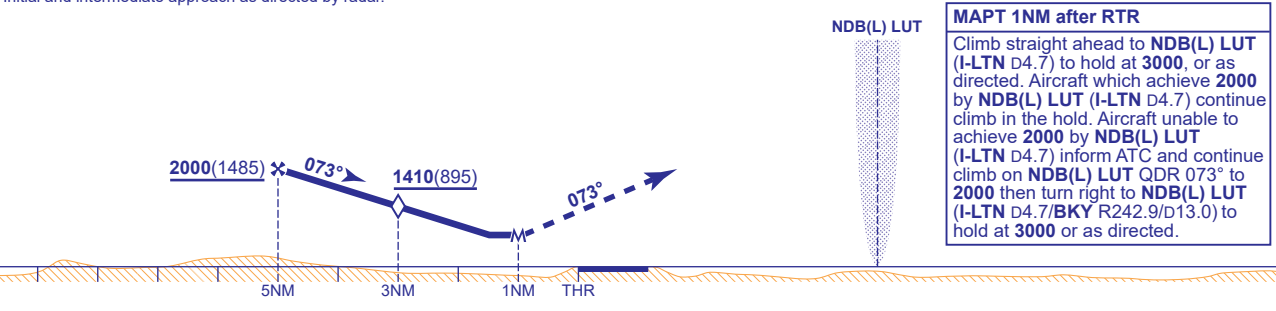
APP	129.550	LUTON RADAR	AD ELEVATION	527
TWR	132.555, 126.730	LUTON TOWER	THR ELEVATION	515
	121.755	LUTON GROUND	OBSTACLE ELEVATION	912 AMSL (397) (ABOVE THR)
RAD	128.750	LUTON DIRECTOR		
ATIS	120.580	ARRIVAL INFORMATION	BEARINGS ARE MAGNETIC	

TRANSITION ALTITUDE
6000



RADAR ADVISORY HEIGHTS Gradient 4.9%, 297FT/NM				
NM	5.0	4.0	3.0 (SDF)	2.0
ALT(HGT)	2000(1485)	1700(1185)	1410(895)	1110(595)

Initial and intermediate approach as directed by radar.



Aircraft Category		A	B	C	D	Rate of descent	G/S KT	160	140	120	100	80
OCA (OCH)	Procedure	990(475)	990(475)	990(475)	990(475)		FT/MIN	790	690	590	500	400
VM(C)OCA (OCH AAL)	Total Area	1100(573)	1100(573)	1300(773)	1300(773)	RTR to MAPT	MIN:SEC	0:23	0:26	0:30	0:36	0:45

NOTE 1 Aircraft will normally be required to hold not lower than 3000.
2 Gliding takes place in ceded airspace north of and beneath LOC. Pilots are warned not to descend below the GP/recommended descent profile. Page EGGW AD 2.22 Paragraph 6 refers.

CHANGE (1/26): MAG VAR, MAG TRACKS UPDATED.